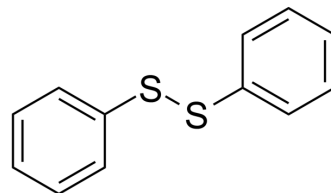


## Diphenyl disulfide

<b>Cat. No.:</b>	HY-Y1177		
<b>CAS No.:</b>	882-33-7		
<b>Molecular Formula:</b>	C <sub>12</sub> H <sub>10</sub> S <sub>2</sub>		
<b>Molecular Weight:</b>	218.34		
<b>Target:</b>	Endogenous Metabolite		
<b>Pathway:</b>	Metabolic Enzyme/Protease		
<b>Storage:</b>	Powder	-20°C	3 years
		4°C	2 years
	In solvent	-80°C	2 years
		-20°C	1 year



### SOLVENT & SOLUBILITY

<b>In Vitro</b>	DMSO : 100 mg/mL (458.00 mM; Need ultrasonic)				
		Solvent Concentration	Mass 1 mg	5 mg	10 mg
	<b>Preparing Stock Solutions</b>	1 mM	4.5800 mL	22.9001 mL	45.8001 mL
		5 mM	0.9160 mL	4.5800 mL	9.1600 mL
10 mM		0.4580 mL	2.2900 mL	4.5800 mL	
Please refer to the solubility information to select the appropriate solvent.					
<b>In Vivo</b>	<ol style="list-style-type: none"> <li>Add each solvent one by one: 10% DMSO &gt;&gt; 40% PEG300 &gt;&gt; 5% Tween-80 &gt;&gt; 45% saline Solubility: ≥ 2.5 mg/mL (11.45 mM); Clear solution</li> <li>Add each solvent one by one: 10% DMSO &gt;&gt; 90% (20% SBE-β-CD in saline) Solubility: ≥ 2.5 mg/mL (11.45 mM); Clear solution</li> <li>Add each solvent one by one: 10% DMSO &gt;&gt; 90% corn oil Solubility: ≥ 2.5 mg/mL (11.45 mM); Clear solution</li> </ol>				

### BIOLOGICAL ACTIVITY

<b>Description</b>	Diphenyl disulfide is an endogenous metabolite.
<b>IC<sub>50</sub> &amp; Target</b>	Human Endogenous Metabolite

---

**Caution: Product has not been fully validated for medical applications. For research use only.**

Tel: 609-228-6898

Fax: 609-228-5909

E-mail: [tech@MedChemExpress.com](mailto:tech@MedChemExpress.com)

Address: 1 Deer Park Dr, Suite Q, Monmouth Junction, NJ 08852, USA