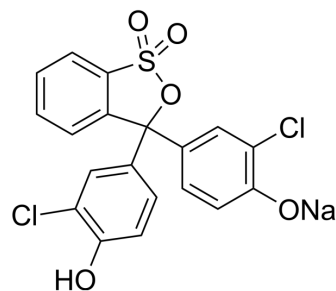


Chlorophenol Red sodium

Cat. No.:	HY-W331502
CAS No.:	123333-64-2
Molecular Formula:	C ₁₉ H ₁₁ Cl ₂ NaO ₅ S
Molecular Weight:	445.25
Target:	Fluorescent Dye
Pathway:	Others
Storage:	Please store the product under the recommended conditions in the Certificate of Analysis.



BIOLOGICAL ACTIVITY

Description	Chlorophenol Red sodium is a pH indicator ^[1] .
-------------	------------------------------------------------------------

REFERENCES

[1]. Moller JV, et al. Indicator dyes as probes of electrostatic potential changes on macromolecular surfaces. *Biochemistry*. 1975 Jun 3;14(11):2317-23.

Caution: Product has not been fully validated for medical applications. For research use only.

Tel: 609-228-6898

Fax: 609-228-5909

E-mail: tech@MedChemExpress.com

Address: 1 Deer Park Dr, Suite Q, Monmouth Junction, NJ 08852, USA