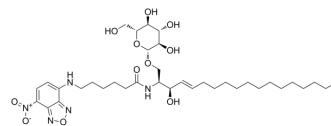


C6 NBD Glucosylceramide

Cat. No.:	HY-W356117
CAS No.:	94885-03-7
Molecular Formula:	C ₃₆ H ₅₉ N ₅ O ₁₁
Molecular Weight:	737.88
Target:	Fluorescent Dye
Pathway:	Others
Storage:	-20°C, sealed storage, away from moisture and light * In solvent : -80°C, 6 months; -20°C, 1 month (sealed storage, away from moisture and light)



BIOLOGICAL ACTIVITY

Description

C6 NBD Glucosylceramide is a glucosylceramide fluorescent derivative (Ex=466 nm, Em=535 nm). C6 NBD Glucosylceramide can be used to study the metabolism and internalization of glucosylceramide and also for the determination of glucosylceramide synthase activity^{[1][2][3]}.

REFERENCES

- [1]. Kok JW, et al. Salvage of glucosylceramide by recycling after internalization along the pathway of receptor-mediated endocytosis. Proc Natl Acad Sci U S A. 1989 Dec;86(24):9896-900.
- [2]. Hayashi Y, et al. A sensitive and reproducible assay to measure the activity of glucosylceramide synthase and lactosylceramide synthase using HPLC and fluorescent substrates. Anal Biochem. 2005 Oct 15;345(2):181-6.
- [3]. di Bartolomeo S, et al. Differential chemosensitizing effect of two glucosylceramide synthase inhibitors in hepatoma cells. Biochem Biophys Res Commun. 2001 Oct 19;288(1):269-74.

Caution: Product has not been fully validated for medical applications. For research use only.

Tel: 609-228-6898

Fax: 609-228-5909

E-mail: tech@MedChemExpress.com

Address: 1 Deer Park Dr, Suite Q, Monmouth Junction, NJ 08852, USA