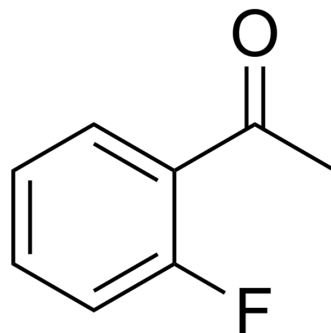


2'-Fluoroacetophenone

Cat. No.:	HY-Y1133		
CAS No.:	445-27-2		
Molecular Formula:	C ₈ H ₇ FO		
Molecular Weight:	138.14		
Target:	Biochemical Assay Reagents		
Pathway:	Others		
Storage:	Pure form	-20°C	3 years
		4°C	2 years
	In solvent	-80°C	6 months
		-20°C	1 month



BIOLOGICAL ACTIVITY

Description	1-(2-Fluorophenyl)ethan-1-one is a biochemical reagent that can be used as a biological material or organic compound for life science related research.
In Vitro	2'-Fluoroacetophenone is used as starting reagent in the synthesis of ascididemin. It is used to produce 1-(2-piperidin-1-yl-phenyl)-ethanone by reaction with piperidine. MCE has not independently confirmed the accuracy of these methods. They are for reference only.

Caution: Product has not been fully validated for medical applications. For research use only.

Tel: 609-228-6898

Fax: 609-228-5909

E-mail: tech@MedChemExpress.com

Address: 1 Deer Park Dr, Suite Q, Monmouth Junction, NJ 08852, USA