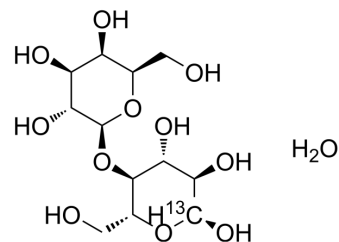


[1-¹³C]Lactose monohydrate

Cat. No.:	HY-W779009
CAS No.:	287100-62-3
Molecular Formula:	C ₁₁ ¹³ CH ₂₄ O ₁₂
Molecular Weight:	361.3
Target:	Bacterial
Pathway:	Anti-infection
Storage:	Please store the product under the recommended conditions in the Certificate of Analysis.



BIOLOGICAL ACTIVITY

Description

[1-¹³C]Lactose monohydrate is an isotopic labeling drug^[1].

REFERENCES

[1]. B Bose-Basu, et al. Deuterium nuclear spin-lattice relaxation times and quadrupolar coupling constants in isotopically labeled saccharides. J Magn Reson. 2000 Jun;144(2):207-16.

Caution: Product has not been fully validated for medical applications. For research use only.

Tel: 609-228-6898

Fax: 609-228-5909

E-mail: tech@MedChemExpress.com

Address: 1 Deer Park Dr, Suite Q, Monmouth Junction, NJ 08852, USA